

Kowa



Technology for Life Science

PORTABLE SLIT LAMP

Kowa **SL-17**

New

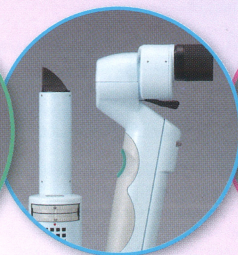
- 20,000 lux white LED source
- Powered by AAA batteries
- Anti-tip design
- Digital image support



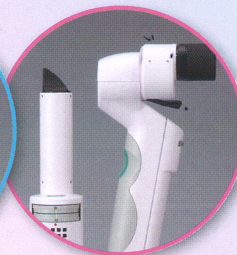
Available in
4 colors!



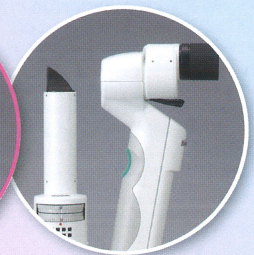
Green



Aqua blue



Pink



White



Technology for Life Science

PORTABLE SLIT LAMP

Kowa SL-17

Kowa Portable Slit Lamps are Now LEDs!

• 20,000 lux white LED source

Illumination is thumb wheel controlled and illuminated for easy viewing in a darkened room.

• Powered by AAA batteries

Kowa SL-17 use the following commercially available batteries:

AAA rechargeable batteries

AAA dry cell batteries

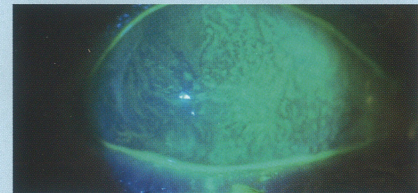
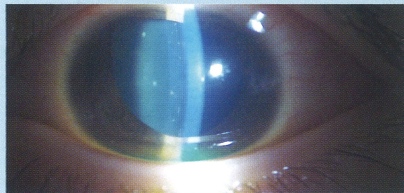
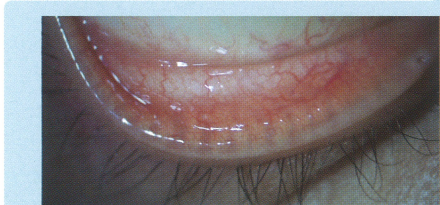
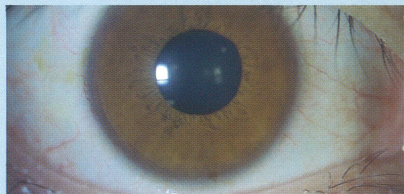
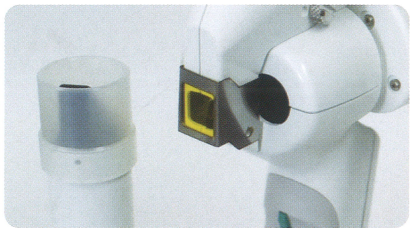
* Excludes lithium-ion and lithium batteries

• Anti-tip design

New circular base increases slit lamp stability providing a safer place to store the instrument.

• Digital image support

Optional camera adapter with diffusion cylinder and yellow filter is available which allows documentation of anterior segment through image and video capture.



Photography Examples

Photo : Dr. Eiichi Nomura, Department of Ophthalmology and Visual Science at Yokohama City University

Specifications

Microscope	
Angle of convergence	13°
Magnification	10X and 16X
Working distance	Approx. 80mm (at 16X magnification) Approx. 100mm (at 10X magnification)
Practical field of view	φ10mm (at 16X magnification) φ15mm (at 10X magnification)
Interpupillary adjustment range	50 to 72mm
Diopter adjustment range	-8 to +5D
Slit Projector	
Slit width	0.1, 0.2, 0.8mm
Spot size	φ1, φ5, φ12mm and shapes of ellipse

Light intensity adjustment	Continuous variable (up to 20,000 lux)
Slit's illuminating angle	Horizontal, ±60°
Filter	Built-in blue filter
Light source	White LED
Continuous lamp operating time	Approx. 130 minutes (at maximum light intensity)
Power	Input : DC4.8 to 6.4V (4 AAA batteries) Power consumption : Up to 4.5VA
Dimensions and Weight	
Dimensions	220(W)x95(D)x220(H)mm
Weight	790g (including batteries)

Specifications and appearances are subject to change without notice.

Distribution name : KOWA SL-17



Kowa Company, Ltd.

World Sales Headquarters

4-14, Nihonbashi-honcho 3-chome, Chuo-ku,
Tokyo 103-8433, Japan
Phone: +81(3)3279-7639
Facsimile: +81(3)3279-7541
URL: <http://www.kowa.co.jp/e-life/>

Kowa Company, Ltd. Hamamatsu Factory

3-1, Shinmiyakoda 1-chome, Kita-ku, Hamamatsu City,
Shizuoka Pref., 431-2103, Japan

Kowa Optimed, Inc.

20001 South Vermont Avenue,
Torrance, CA 90502, U.S.A.
Phone: +1(310)327-1913 Facsimile: +1(310)327-4177
URL: <http://kowa-usa.com/>

Kowa Optimed Europe Ltd.

Sandhurst House, 297 Yorktown Road,
Sandhurst, Berkshire GU47 0QA, U.K.
Phone: +44(127)693-7021 Facsimile: +44(127)693-7023
URL: <http://www.kowamedical.com/>

Kowa Optimed Deutschland GmbH

Bendemannstrasse 9,
40210 Duesseldorf, F.R. Germany
Phone: +49(211)54218400 Facsimile: +49(211)54218410
URL: <http://www.kowamedical.com/>

REF SL170_1494100CO
Printed in Japan.

